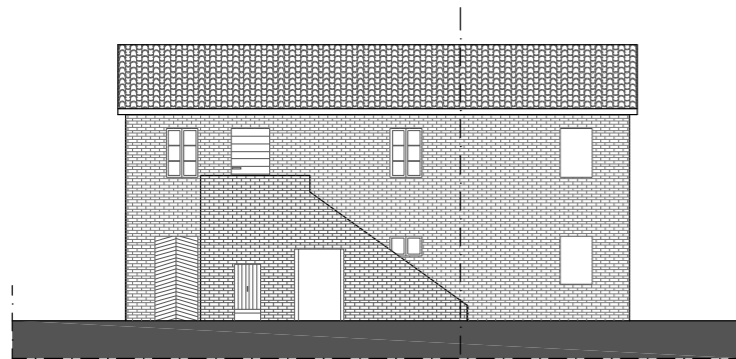
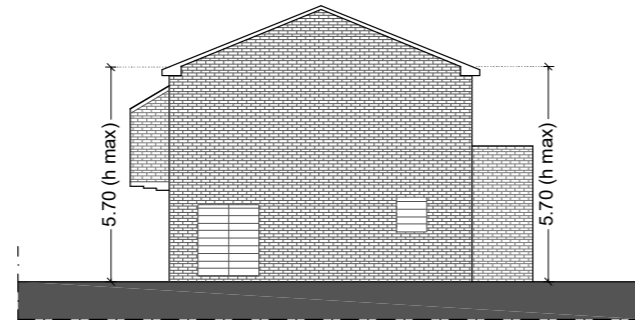


Prospetto SUD

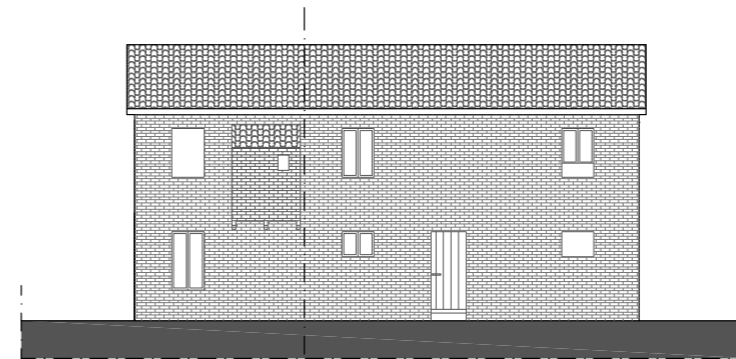


ANTE 1950 POST 1950

Prospetto OVEST

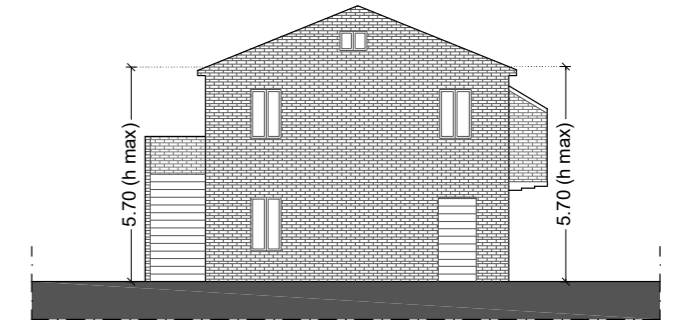


Prospetto NORD

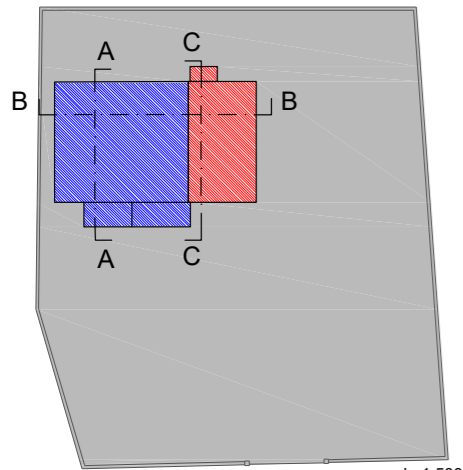


POST 1950 ANTE 1950

Prospetto EST

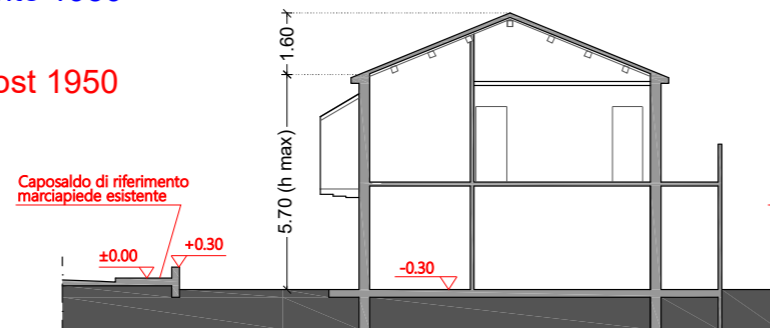


Planimetria

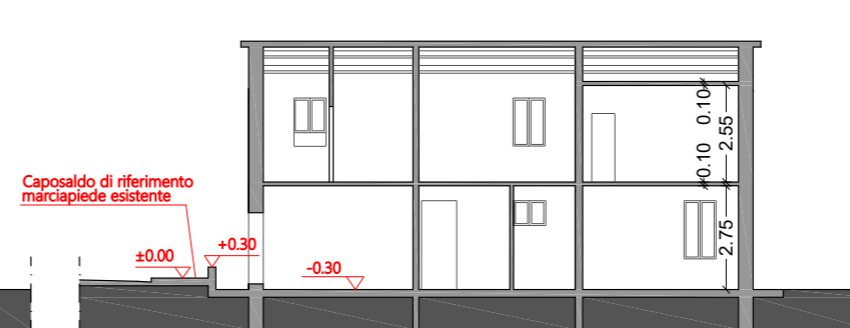


Ante 1950  
Post 1950

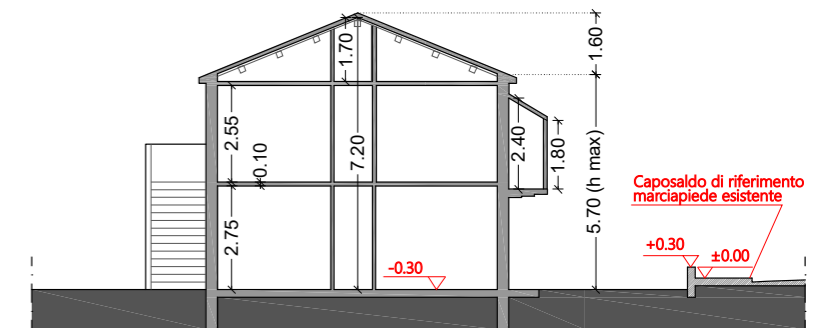
Sezione A-A



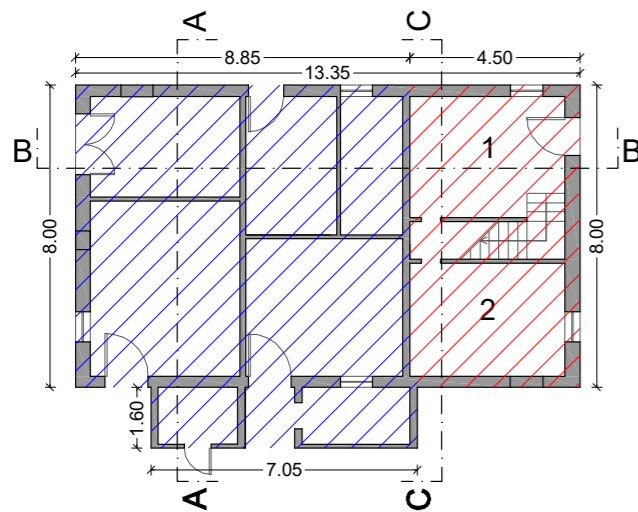
Sezione B-B



Sezione C-C

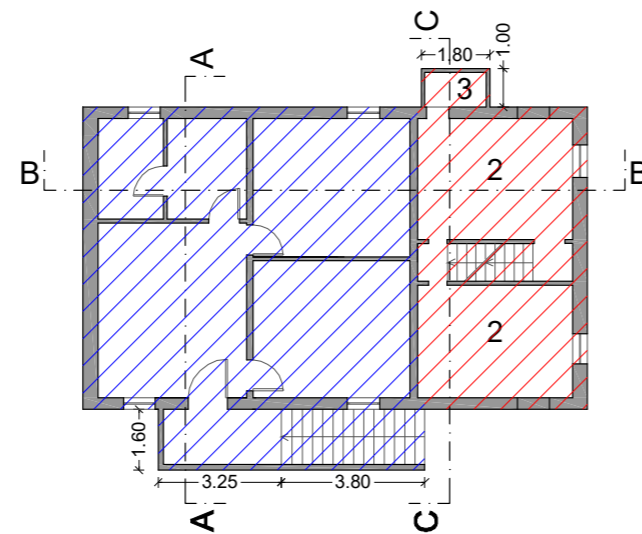


Piano Terra



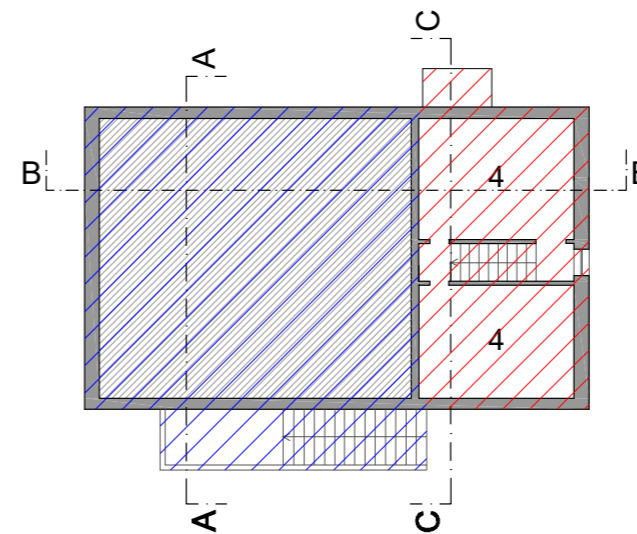
1 Cucina  
2 Camera

Piano Primo



2 Camera  
3 Bagno

Piano Sottotetto



4 Sgombero

Pianta Copertura

