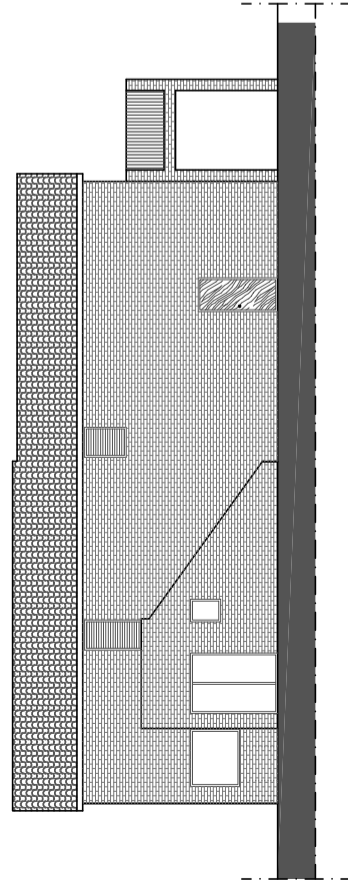
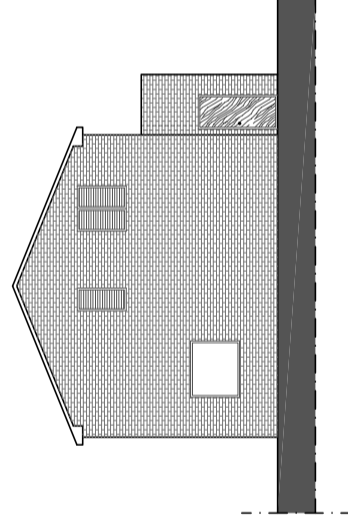


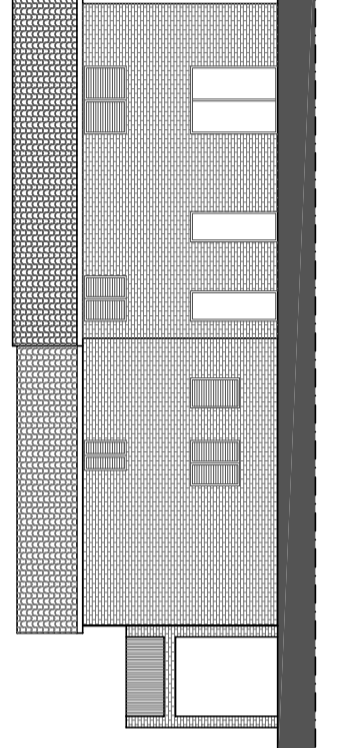
Prospetto NORD



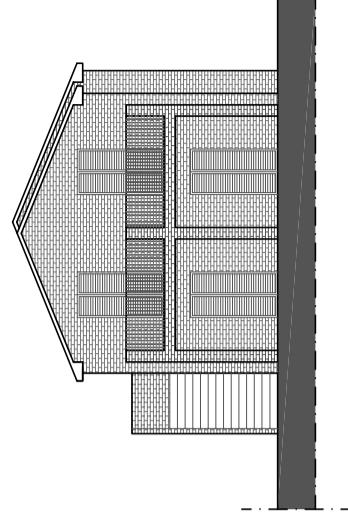
Prospetto OVEST



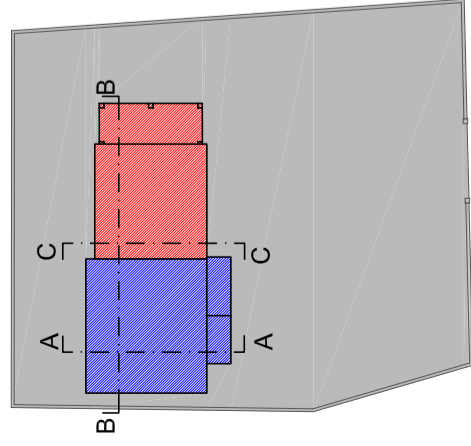
Prospetto NORD



Prospetto EST



Planimetria



Ante 1950

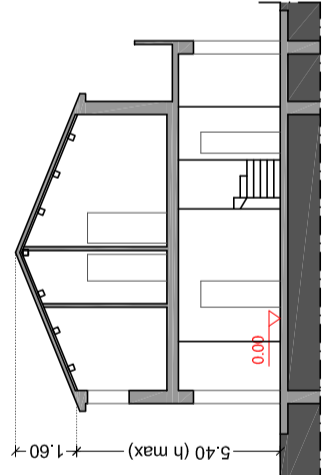
Post 1950

Caposaldo di riferimento  
marciapiedi esistente

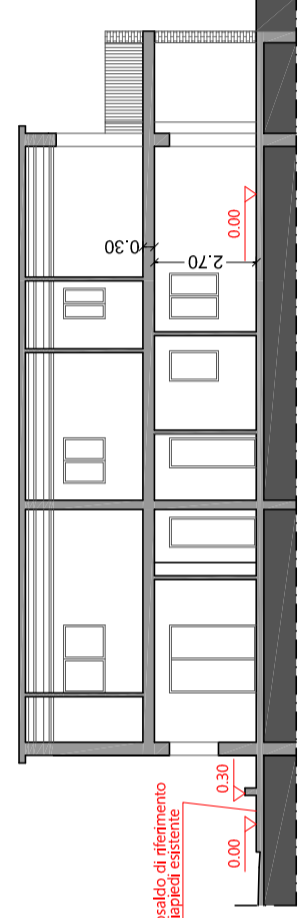


scala 1:500

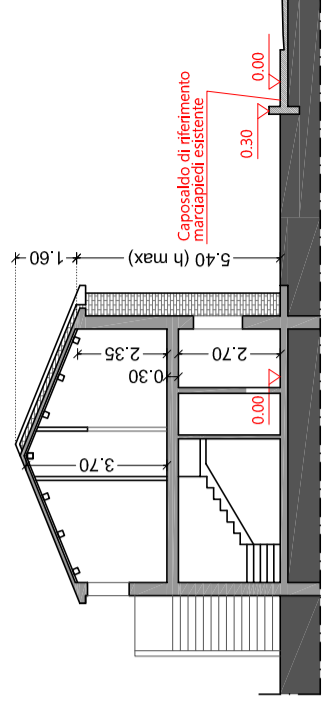
Sezione A-A



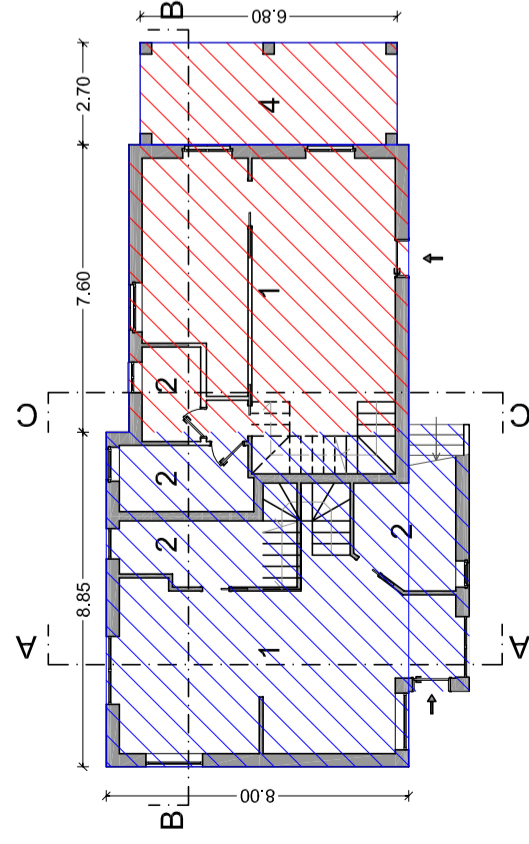
Sezione B-B



Sezione C-C

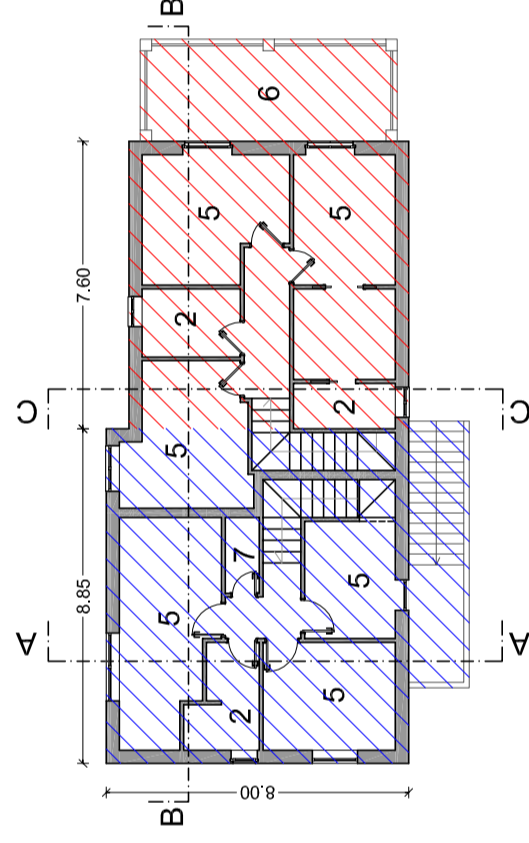


Piano Terra



- 1 Soggiorno - Cucina - Pranzo
- 2 Bagno - Lavanderia
- 3 Ripostiglio - Dispensa
- 4 Loggiato

Piano Primo



- 5 Camera
- 2 Bagno
- 6 Terrazza
- 7 Ripostiglio

Piano Copertura

